

APPENDIX 1 - BATHROOM PARTITIONS SPECIFICATION

PROJECT 217
540 + 578 NEPPERHAN AVENUE
YONKERS, NY, 10701

This is the most popular style of partitions. It is attached to the floor and stabilized at the top of the pilaster with anti-grip headrail. Floor mounted overhead braced material is recommended for heavy traffic or vandalism prone areas. It does not require any special floor or ceiling construction which makes it suitable for new or existing construction.

Construction

Doors, panels and pilasters are constructed from 1" thick High Density Polyethylene (HDPE) resins pressed under high pressure to form a single component. This material is waterproof, non-absorbent and has a self-lubricating surface which resists marks from graffiti. All plastic components are shipped with a self-adhesive coating for protection during installation. Bradmar® is available in 21 standard colors.

Panels and Doors

Panels and doors are fabricated 55" high, all edges are rounded to a 3/16" radius. Panels and doors receive an aluminum heat sink strip fastened to the bottom edge which helps dissipate any applied heat. Each door is pre-drilled to receive an integral hinge assembly. The closing position of each hinge is fully adjustable.

Pilasters and Shoes

The floor edge of the pilaster shall be provided with a 5/16" zinc-plated lag screw for leveling. Pilasters are secured to the floor using a 3" high, one-piece, type 304 stainless steel shoe with a #4 stain brushed finish. Plastic shoes available for select colors.

Hardware

Mills standard hardware is constructed from 6463-T-5 heavy-duty aluminum. Compartments are provided with all hardware and stainless steel torx head w/ pin fasteners to complete installation for applications with concrete floors and masonry block walls.

Door Hardware

Standard integral hinge system consisting of a 1/2" diameter nylon gravity cam unit with a 3/16" stainless steel center pin (bottom) and a 1/2" nylon rod (top). Strike/keeper is 6" long and is fabricated from heavy-duty extruded aluminum (6463-T-5 alloy) with wraparound flanges. Strike/keeper is mounted to the pilaster with thru-bolts.

Coat hooks, door bumpers and door pulls are provided in a Zamac alloy with satin finish. Integral hinge doors 32"-36" wide are supplied with an individual coat hook, door bumper and door pull. Theft-resistant fasteners are supplied with all hardware.

Brackets

Continuous brackets are fabricated from heavy-duty aluminum, are 54" long and are available in single- or double-ear style. Plastic brackets available for select colors.

Headrail

Etched and anodized aluminum headrail is extruded with an anti-grip profile. It clamps over the pilaster and is secured at the wall with stainless steel brackets.



Options

Partition Colors

- | | |
|--|--|
| <input type="checkbox"/> Beige | <input type="checkbox"/> Linen* |
| <input type="checkbox"/> Black* | <input type="checkbox"/> Moss |
| <input type="checkbox"/> Bronze* | <input type="checkbox"/> Plum* |
| <input type="checkbox"/> Burgundy | <input type="checkbox"/> Sky Blue* |
| <input type="checkbox"/> Buttermilk | <input type="checkbox"/> Spice* |
| <input type="checkbox"/> Canyon Granite* | <input type="checkbox"/> Stardust Gray |
| <input type="checkbox"/> Caribbean Sage | <input type="checkbox"/> Starry Night |
| <input type="checkbox"/> Charcoal Gray | <input type="checkbox"/> Toffee |
| <input type="checkbox"/> Deep Blue | <input type="checkbox"/> 100% Post-Consumer Beige** |
| <input type="checkbox"/> Desert Stone | <input type="checkbox"/> 100% Post-Consumer Charcoal** |
| <input type="checkbox"/> Dove Stone | <input type="checkbox"/> 100% Post-Consumer Moss** |
| <input checked="" type="checkbox"/> Gray | <input type="checkbox"/> 100% Post-Consumer Toffee** |
| <input type="checkbox"/> Hunter* | <input type="checkbox"/> 100% Post-Industrial Black* |

Hinges

- | | |
|---|---|
| <input checked="" type="checkbox"/> Integral (STD) | <input type="checkbox"/> 8" Aluminum Wraparound |
| <input type="checkbox"/> Continuous Aluminum Spring Loaded Hinge | |
| <input type="checkbox"/> Continuous Stainless Steel Spring Loaded Hinge | |

Door Hardware

- | | |
|---|---|
| <input type="checkbox"/> Aluminum (STD) | <input checked="" type="checkbox"/> Stainless Steel |
|---|---|

Wall Brackets

- | | |
|---|---|
| <input checked="" type="checkbox"/> Continuous – Aluminum (STD) | <input type="checkbox"/> Continuous – Stainless Steel |
| <input type="checkbox"/> Stirrup Style – Aluminum | <input type="checkbox"/> Continuous – Plastic |

Miscellaneous

- | |
|-----------------------------------|
| <input type="checkbox"/> Cut Outs |
|-----------------------------------|

* Plastic brackets and shoes available for select colors.

** 100% Post-Consumer HDPE may have some minor flaws and the color may be inconsistent.

Verify all rough-in dimensions prior to installation.

Consult local and national codes: conformity and compliance to local and national codes is the responsibility of the installer.

Sample Specification**Part 1 – General**

1.1 Summary

This section includes:

- A. Solid plastic toilet partitions consisting of partitions, urinal screens, shower stalls and dressing compartments.

1.2 Related Sections

- A. Section 10800: Toilet and Bath Accessories

1.3 Submittals

- A. Shop Drawings: Showing layout of toilet partitions.
- B. Product Data: Manufacturer's catalog cuts of typical panel, pilaster, door, hardware and fastenings.
- C. Color Chips: Manufacturer's complete range of standard colors for Bradmar® Solid Plastic.
- D. Verification Samples: Sample of actual specified plastic chip for color and texture verification.

1.4 Quality Assurance

- A. Components of toilet partitions shall be sourced from one single source manufacturer who certifies that materials meet or exceed specifications.
- B. Installation: Installer shall have a history of completed jobs of similar size and scope and shall be qualified.

1.5 Delivery, Storage and Handling

- A. Pre-finished materials shall be delivered to the job site in original, unopened cartons or other packaging materials necessary to protect structure and finishes. Materials shall be stored in manufacturer's packaging until installation. Partitions shall be stored in horizontal position with adequate support to ensure flatness and to prevent damage to pre-finished surfaces.

1.6 Project Conditions

- A. Building shall be enclosed and provide complete protection from outside weather. Temperature within building shall be above a minimum of 60°F and below 100°F.

1.7 Warranty

- A. Manufacturer shall provide a 15-year warranty against corrosion, breakage and delamination of plastic material under normal conditions.

Part 2 – Products

2.1 Manufacturer

- A. Provide products manufactured by The Mills Company, subsidiary of Bradley Corp., Menomonee Falls, WI.

2.2 Equipment

- A. Sentinel™ Floor-Mounted Overhead Braced Series 400 toilet partition system.

2.3 Components

- A. Doors, Panels and Pilasters: Shall be constructed from High Density Polyethylene (HDPE) resins, pressed under high pressure, forming a single component. The material shall be waterproof, non-absorbent and have a self-lubricating surface that resists marks from graffiti. All plastic components shall be covered with a protective self-adhesive coating.

1. Door, panel and pilaster shall be 1" thick and have edges rounded to a 3/16" radius.

2. Doors and panels shall be 55" high and mounted at 14" above the finished floor. An aluminum heat sink strip shall be fastened to the bottom edge of doors and panels.

3. Pilasters shall be 82" high and shall be secured to the floor using a 3" high, one-piece, type 304 stainless steel shoe with a #4 satin brushed finish. Headrail of etched and anodized aluminum shall be extruded with "anti-grip" profile clamps over pilasters and shall be secured to the wall with stainless steel brackets.

4. Urinal screens shall have the same construction as doors, panels and pilasters. Urinal screens shall be 42" high and mounted at 18" above the finished floor.

- B. Hardware: Mills heavy-duty aluminum hardware and stainless steel fasteners necessary to complete an installation shall be provided.

1. Integral hinge system shall consist of 1/2" diameter nylon gravity cam unit with a 3/16" stainless steel center pin for the bottom and a 1/2" nylon rod for the top. The closing position of each hinge shall be fully adjustable.

2. Latches shall be fabricated from heavy-duty extruded aluminum (6463-T-5 alloy). Slide bolt shall have a black anodized finish. Latch is mounted to the door with stainless steel theft-resistant bolts.

3. Strike/keeper shall be 6" long and fabricated from heavy-duty extruded aluminum (6463-T-5 alloy) with wraparound flanges. Strike/keeper shall be mounted to the pilaster with thru-bolts.

4. Coat hooks, door bumpers, and door-pulls shall be provided in a Zamac alloy with a satin finish. Integral hinge doors 32"-36" wide shall be supplied with an individual coat hook, door bumper and door pull.

5. Continuous brackets shall be 54" long and shall be fabricated from heavy-duty aluminum (6463-T-5 alloy). Single- or double-ear brackets shall be provided at appropriate locations.

6. All fasteners shall be stainless steel torx head with pin.

Part 3 – Execution

3.1 Inspection

- A. Before installation, the installer shall inspect the site to ensure that no defects or conditions exist which would result in an unsatisfactory installation of the partitions. Measurements should also be taken at this time to further insure correct installation.

3.2 Installation

- A. Install partitions, screens, dressing compartments and enclosures in accordance with shop drawings and manufacturer's current installation instructions. Leave compartments complete, clean and free from defects in workmanship.

- B. Install panel or locate outswinging doors to prevent their opening more than 105°.

- C. Doors and hardware shall be thoroughly adjusted and left in proper working condition. Set doors in open or close position as required.

3.3 Cleaning

- A. All rubbish and cartons generated by installer shall be removed and the area left broom clean.

Verify all rough-in dimensions prior to installation.

Consult local and national codes: conformity and compliance to local and national codes is the responsibility of the installer.

The following information is provided as a summary of currently available data in the industry. It is *NOT* intended to be an interpretation of ADAAG, rather a reference for further research.

Reference Sources

- The American with Disabilities Act (ADA)
- ADA-ABA Accessibility Guidelines for Buildings and Facilities
- ANSI A117.1 – American National Standard for Buildings and Facilities
- UFAS – Uniform Federal Accessibility Standards

In order to make the ADAAG enforceable, these Guidelines were subsequently amended and adopted by the U.S. Department of Justice as the ADA Standards for Accessible Design (the *Standards*). Copies of the most updated Standards can be obtained from the Department of Justice and the Access Board in Washington, DC. The law applies to most buildings and facility types nationwide regardless of state or local requirements, but it is not a building code in and of itself.

Authority has been left with each state and local government to adopt and enforce its own building codes, but the office of the U.S. Assistant Attorney General for Civil Rights has the authority under the ADA to certify that a state or local building code meets or exceeds the minimum requirements of ADA, and such certificate of equivalency can be used as rebuttal evidence in any subsequent litigation. To help everyone with legal compliance, the federal government has established Disability and Business Technical Assistance Centers (DBTAC) in each region of the country to provide information and advice on the ADA, including ADAAG requirements.

All building plans should be confirmed with local jurisdictions to ensure job compliance.

ADA Title III requires that all new construction of public accommodations and commercial facilities meet or exceed ADAAG specifications. All additions, and substantial alterations to functional spaces in existing public accommodations and commercial facilities are considered new construction and subject to the same ADAAG requirements.

General Information

Doors

All interior doors (including toilet partition doors) must push or pull open with a maximum of 5 pounds of force. Door handles, pulls, latches, locks, and other opening devices should have a shape that is easy to operate with one hand, without tight grasping, pinching or twisting of the wrist; and they should be mounted no higher than 48" above the finish floor.

Toilets

"Undercut" bowls are preferred. The height of the toilet seat is perhaps the most critical factor. The height of toilet seats must be 17" to 19" above the finish floor. Moderate heights of 17" to 18" work well in standard compartments, while heights of 18" to 19" work best in the 36" wide walk-in compartments.

Verify all rough-in dimensions prior to installation.

Consult local and national codes: conformity and compliance to local and national codes is the responsibility of the installer.

Grab Bars

All must have a diameter of 1-1/4" to 1-1/2". Required mounting heights are 33" to 36" from the centerline of the grab bar to the finish floor. The structural strength of all grab bars and their mounting devices must withstand more than 250 lbf.

Standard compartments require one grab bar at least 40" long to be mounted on the side wall or partition nearest the toilet, no more than 12" from the back wall. A second grab bar at least 36" long must be mounted on the back wall, no more than 6" from the side wall or partition nearest the toilet.

Note: Local municipalities may have additional grab bar requirements.

Toe clearance at least 9" above the finish floor is required under the front partition and one side partition of all accessible compartments. Toe clearance is not required if the depth of the compartment is greater than 60".

Toilet Compartments

Standard Compartment (Wheelchair Accessible)

Required for all new construction and alterations with an out-swinging door no more than 4" from the corner diagonally from the toilet. The toilet must be offset on the back wall with its centerline 18" from the nearest side wall or partition. Horizontal grab bars must be mounted behind the toilet and on the nearest side wall or partition. Refer to the illustration on page 2 for dimensions and more detailed information.

Stall Width

60" Minimum (Inside Clear)

Stall Depth

56" Minimum (Inside Clear) with wall mounted toilets

59" Minimum (Inside Clear) with floor mounted toilets

Standard Walk-In (36" Wide) Compartment

Ambulatory Accessible Compartment for washrooms with 6 or more toilets. With an out-swinging door. The toilet must be centered on the back wall. Horizontal grab bars must be mounted on each side wall or partition. Refer to the illustration on page 2 for dimensions and more detailed information.

Note: Has unspecified clear opening for door size.

Stall Width

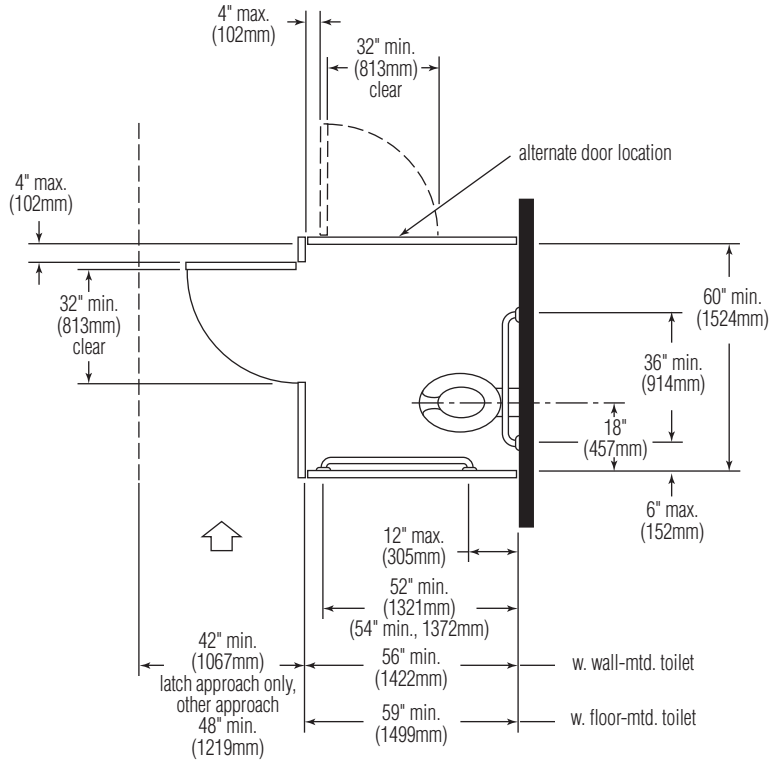
36" Minimum & Maximum (Inside Clear)

Stall Depth

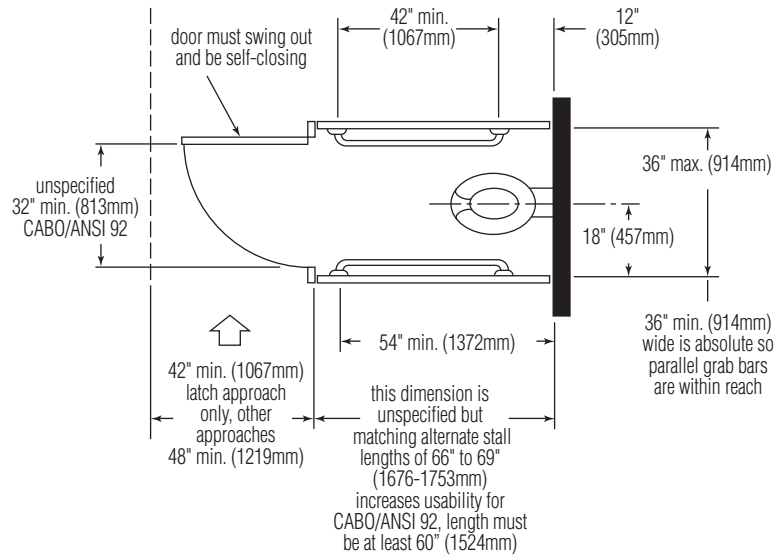
Unspecified, can be same depth as adjoining stalls.

60" Minimum (Inside Clear) required by CABO/ANSI 92

Standard Compartment (Wheelchair Accessible)



Standard Walk-In (36") Wide Compartment



Verify all rough-in dimensions prior to installation.

Consult local and national codes: conformity and compliance to local and national codes is the responsibility of the installer.

APPENDIX 2 - BATHROOM FIXTURES SPECIFICATION

PROJECT 217
540 + 578 NEPPERHAN AVENUE
YONKERS, NY, 10701

MADERA™ ELONGATED 10" ROUGH

- Vitreous china
- Low-consumption (6.0 Lpf/1.6 gpf)
- 10" roughing-in
- Elongated bowl
- Direct-fed siphon jet action
- Fully glazed 2" ballpass trapway
- 11" x 13" water surface area
- 1-1/2" top spud
- 2 bolt caps
- 100% factory flush tested

- 2234.015** Top spud
- 2234.137** Top spud with slotted rim for bedpan holding (white only)

Nominal Dimensions:
768 x 381 x 359mm
(30-1/4" x 15" x 14-1/8")

Recommended working pressure--between
25 psi at valve when flushing and 80 psi
static

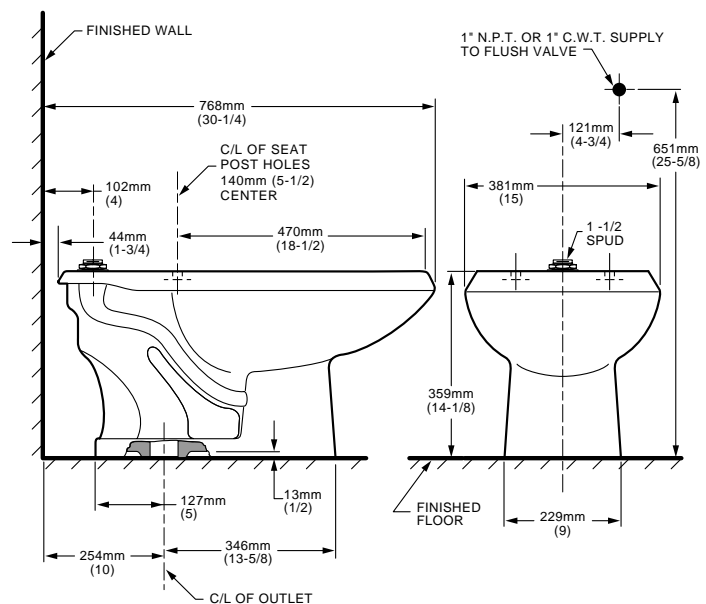
Fixture only, less seat

**Compliance Certifications -
Meets or Exceeds the Following Specifications:**

- ASME A112.19.2M (and 19.6M) for Vitreous China Fixtures - includes Flush Performance, Ball Pass Diameter, Trap Seal Depth and all Dimensions

To Be Specified

- Color: White Bone Silver Black
 Shell
- Seat: Olsonite #95 open front seat less cover
- Seat: Church #9500C open front seat less cover
- Alternate Seat:
- Flush Valve: Sloan Royal #111
- Alternate Flush Valve:



NOTES:
PRODUCT 2234.015 SHOWN, 2234.137 SAME AS EXCEPT WITH SLOTTED RIM FOR BED PAN HOLDING.
TO COMPLY WITH AREA CODE GOVERNING THE HEIGHT OF VACUUM BREAKER ON FLUSH VALVE, THE PLUMBER MUST VERIFY DIMENSIONS SHOWN FOR SUPPLY ROUGH-IN.
FLUSH VALVE NOT INCLUDED AND MUST BE ORDERED SEPARATELY.
THIS TOILET IS DESIGNED TO ROUGH-IN AT A MINIMUM DIMENSION OF 254MM (10") FROM FINISHED WALL TO C/L OF OUTLET.
IMPORTANT: Dimensions of fixtures are nominal and may vary within the range of tolerances established by ANSI Standard A112.19.2.
These measurements are subject to change or cancellation. No responsibility is assumed for use of superseded or voided pages.



BARRIER FREE

MADERA™ 17"H ELONGATED 10" ROUGH

- Vitreous china
- Low-consumption (6.0 Lpf/1.6 gpf)
- 10" roughing-in
- 17" rim height
- Elongated bowl
- Direct-fed siphon jet action
- Fully glazed 2" ballpass trapway
- 11" x 13" water surface area
- 1-1/2" top spud
- 2 bolt caps
- 100% factory flush tested

- 3043.102** Top spud
- 3043.156** Top spud with slotted rim for bedpan holding (white only)

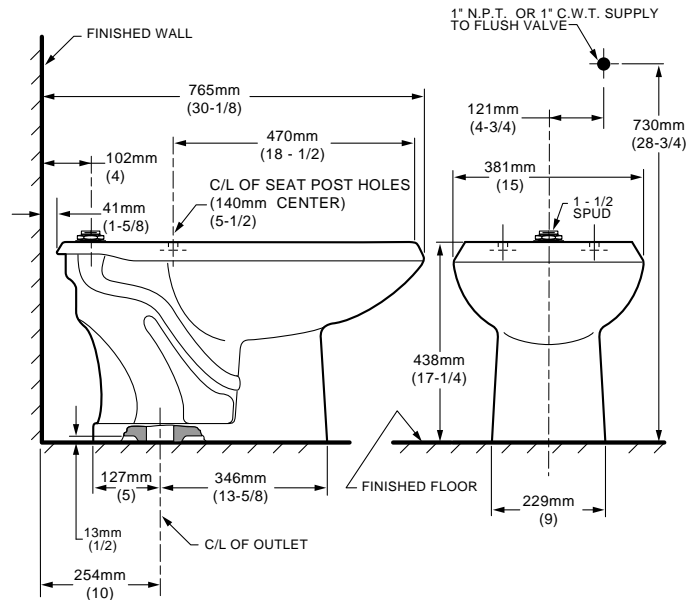
Nominal Dimensions:
765 x 381 x 438mm (30-1/8" x 15" x 17-1/4")

Recommended working pressure--between
25 psi at valve when flushing and 80 psi
static

Fixture only, less seat and bolt caps

**Compliance Certifications -
Meets or Exceeds the Following Specifications:**

- ASME A112.19.2M (and 19.6M) for Vitreous China Fixtures - includes Flush Performance, Ball Pass Diameter, Trap Seal Depth and all Dimensions



To Be Specified

- Color: White Bone Silver Black Shell
- Seat: Olsonite #95 open front seat less cover
- Seat: Church #9500C open front seat less cover
- Alternate Seat:
- Flush Valve: Sloan Royal #111
- Alternate Flush Valve:

NOTES:
PRODUCT 3043.102 SHOWN, 3043.156 SAME AS EXCEPT WITH SLOTTED RIM FOR BED PAN HOLDING.
THIS TOILET IS DESIGNED TO ROUGH-IN AT A MINIMUM DIMENSION OF 254MM (10") FROM FINISHED WALL TO C/L OF OUTLET.
TO COMPLY WITH AREA CODE GOVERNING THE HEIGHT OF VACUUM BREAKER ON FLUSH VALVE, THE PLUMBER MUST VERIFY DIMENSIONS SHOWN FOR SUPPLY ROUGHING.
FLUSH VALVE NOT INCLUDED AND MUST BE ORDERED SEPARATELY.
IMPORTANT: Dimensions of fixtures are nominal and may vary within the range of tolerances established by ANSI Standard A112.19.2.
These measurements are subject to change or cancellation. No responsibility is assumed for use of superseded or voided pages.



● When installed so top of seat is 432 to 483mm (17" to 19") from the finished floor.
MEETS THE AMERICAN DISABILITIES ACT GUIDELINES AND ANSI A117.1 REQUIREMENTS FOR ACCESSIBLE AND USEABLE BUILDING FACILITIES- CHECK LOCAL CODES.



WASHBROOK™ 1.0 GPF WASHOUT URINAL

- Vitreous china
- Low-consumption (3.8 Lpf/1.0 gpf)
- Flushing rim
- Elongated 14" rim from finished wall
- Washout flush action
- Extended sides for privacy
- 3/4" inlet spud
- Outlet connection threaded 2" inside (NPTF)
- 2 wall hangers
- Fixture only
- Meets ANSI flush requirements at 1.0 GPF

6501.010 Top spud

6506.011 Back spud

Nominal Dimensions:

355 x 470 x 692mm
(14" x 18-1/2" x 27-1/4")

Recommended working pressure—between
20 psi at valve when flushing and 80 psi static.

Compliance Certifications -

Meets or Exceeds the Following Specifications:

- ASME A112.19.2 for Vitreous China Fixtures

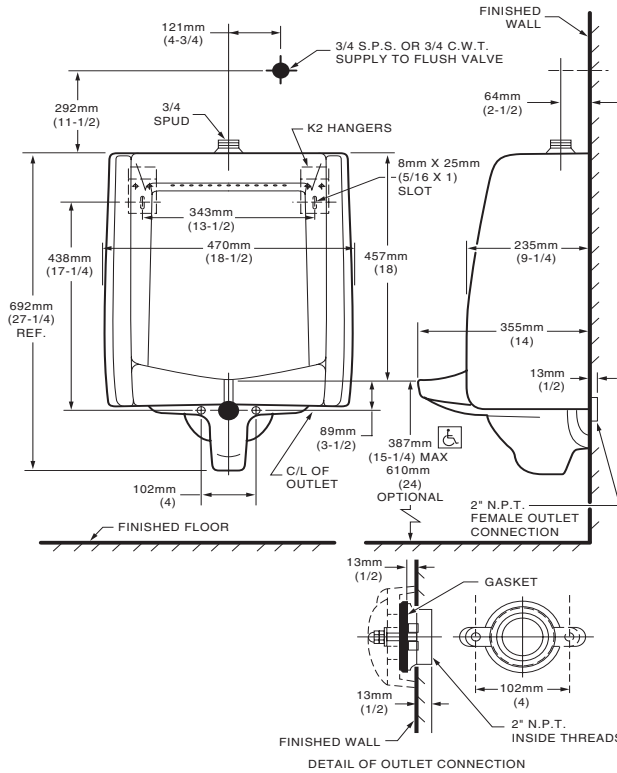


SEE REVERSE FOR ROUGHING-IN DIMENSIONS

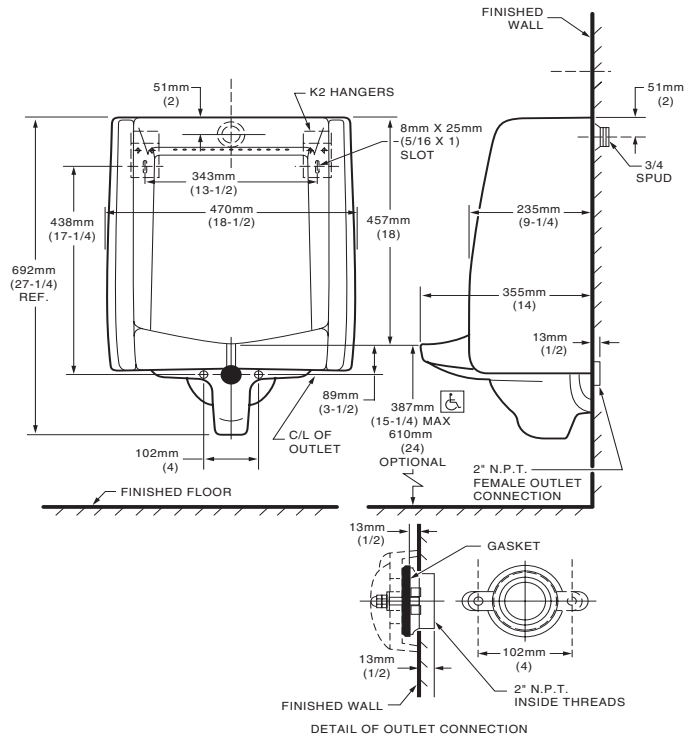
To Be Specified:

- Color: White Bone Silver Linen
- Flush Valve:
 - Sloan Royal 186-1 (Top Spud)
 - Sloan Royal 195-1 (Back Spud)
- Alternative Flush Valve:
- Stainless Steel Strainer: 047068-0070A

6501.010 TOP SPUD



6506.011 BACK SPUD



MEETS THE AMERICANS WITH DISABILITIES ACT GUIDELINES AND ANSI A117.1 ACCESSIBLE AND USABLE BUILDINGS AND FACILITIES - CHECK LOCAL CODES.

- When installed so top of rim is 387mm (15-1/4") from finished floor.

NOTES:

FLUSH VALVE NOT INCLUDED AND MUST BE ORDERED SEPARATELY. PROVIDE SUITABLE REINFORCEMENT FOR ALL WALL SUPPORTS.

IMPORTANT: Dimensions of fixtures are nominal and may vary within the range of tolerances established by ANSI Standard A112.19.2. These measurements are subject to change or cancellation. No responsibility is assumed for use of superseded or voided pages.



COMRADE WALL-HUNG LAVATORY

- Vitreous china
- Rear overflow
- Soap depression
- Faucet ledge (faucet not included)

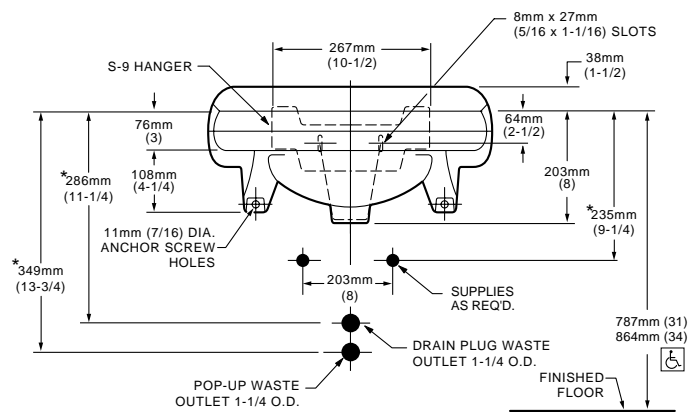
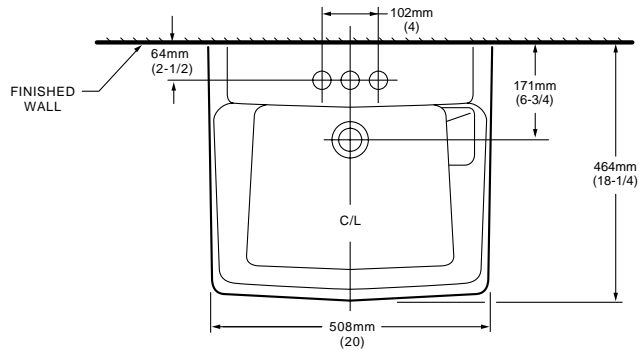
0124.024 With wall hanger (Illustrated)
Faucet holes on 102mm (4") centers

0124.131* For concealed arms support
Faucet holes on 102mm (4") centers

Nominal Dimensions:
508 x 464mm
(20" x 18-1/4")

Bowl sizes:
381mm (15") wide,
276mm (10-7/8") front to back,
159mm (6-1/4") deep

**Compliance Certifications -
Meets or Exceeds the Following Specifications:**
• ASME A112.19.2M for Vitreous China Fixtures



To Be Specified

- Color: White Bone Silver
 Fawn Beige
- Faucet*:
- Faucet Finish:
- Supplies:
- 1-1/4" Trap:
- Nipple:
- Concealed Arms Support (by others):

* See faucet section for additional models available

Top of front rim mounted 864mm (34") from finished floor.
MEETS THE AMERICAN DISABILITIES ACT GUIDELINES AND ANSI A117.1 ACCESSIBLE AND USEABLE BUILDINGS AND FACILITIES - CHECK LOCAL CODES.

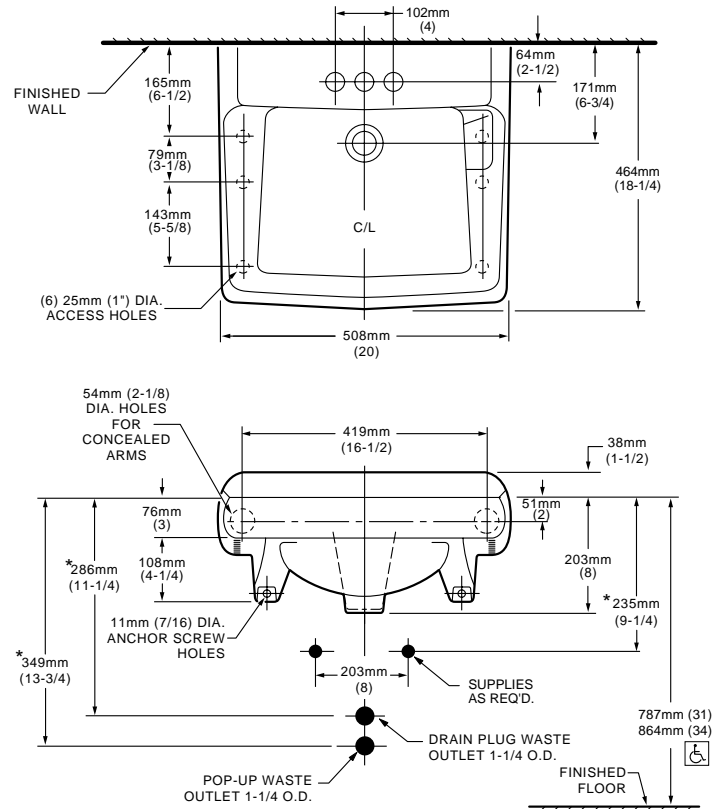
* Rough-in for Concealed Arms shown on reverse.

NOTES:

* DIMENSIONS SHOWN FOR LOCATION OF SUPPLIES AND "P" TRAP ARE SUGGESTED. PROVIDE SUITABLE REINFORCEMENT FOR ALL WALL SUPPORTS. FITTINGS NOT INCLUDED AND MUST BE ORDERED SEPARATELY.
IMPORTANT: Dimensions of fixtures are nominal and may vary within the range of tolerances established by ANSI Standard A112.19.2. These measurements are subject to change or cancellation. No responsibility is assumed for use of superseded or voided pages.



BARRIER FREE



NOTES:

LAVATORY DESIGNED TO MEET ADA HANDICAPPED STANDARDS WITH MOUNTING HEIGHT SET AT 864MM (34") ABOVE FINISHED FLOOR.

* DIMENSIONS SHOWN FOR LOCATION OF SUPPLIES AND "P" TRAP ARE SUGGESTED.

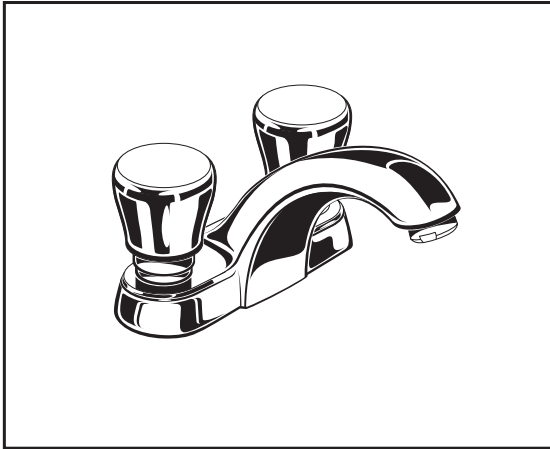
FITTINGS NOT INCLUDED AND MUST BE ORDERED SEPARATELY.

PROVIDE SUITABLE REINFORCEMENT FOR ALL WALL SUPPORTS.

CONCEALED ARM SUPPORT AS REQUIRED TO BE FURNISHED BY OTHERS.

IMPORTANT: Dimensions of fixtures are nominal and may vary within the range of tolerances established by ANSI Standard A112.19.2

These measurements are subject to change or cancellation. No responsibility is assumed for use of superseded or voided leaflet.



MODEL NUMBER:

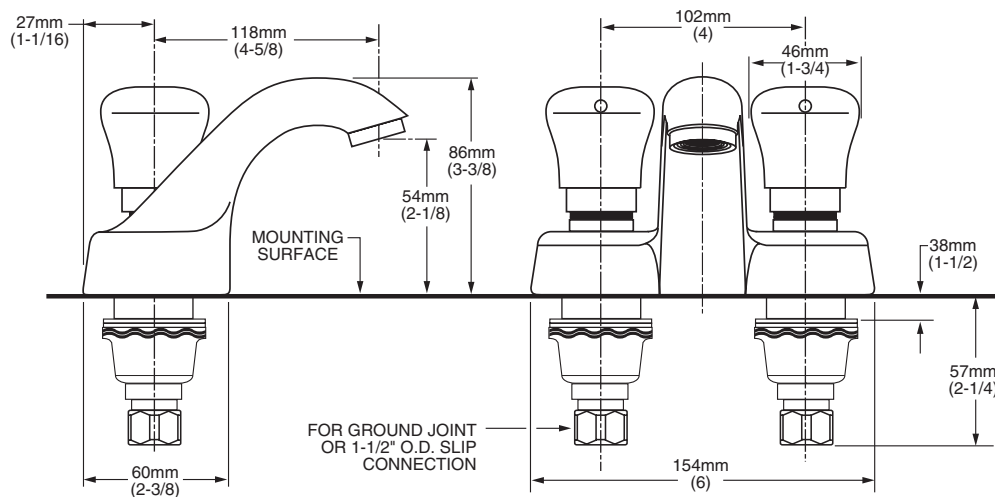
- **1340.225** Cast spout, 1.5 GPM vandal resistant male aerator, no grid drain

GENERAL DESCRIPTION:

Metering centerset conventional spout faucet. Vandal resistant solid brass construction. Easy-push handles. Water conserving 1.5 GPM aerator set for a maximum of 0.25 gallon flow per activation. Replaceable valve cartridge. Adjustable flow cycle.

PRODUCT FEATURES:

- **Vandal-Resistant Brass Construction and Aerator:**
Durable - Excellent in high use applications.
- **Automatic Shut-off:** Stops water and energy waste. Ideal for public restrooms where uncontrolled water usage is costly.
- **Meets ADA Standard:** Requires less than 5 lbs. of operating force to initiate flow per ANSI A117.1.
- **Adjustable Flow Cycle**
- **Replaceable Valve Cartridge:** Facilitates simple replacement.
- **Hot/Cold Button Indicators**




SUGGESTED SPECIFICATION

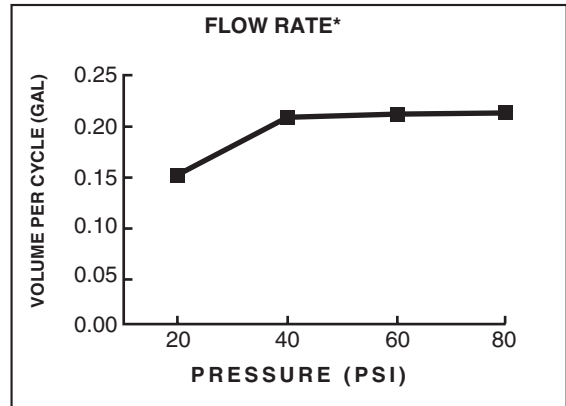
Metering faucet shall feature a vandal-resistant brass construction with a replaceable valve cartridge and an adjustable flow cycle. Shall also feature a vandal-resistant aerator which maintains flow below the maximum 0.25 gallons per cycle required by ANSI A112.18.1M. Push button activator shall meet ANSI A117.1 Standard. Fitting shall be American Standard Model # 1340.____.

CODES AND STANDARDS

These products meet or exceed the following codes and standards:

- ANSI A117.1**
- ASME A112.18.1**
- CSA B 125**
- NSF 61/Section 9**

 Meets the American Disabilities Act Guidelines and **ANSI A117.1** Requirements for the physically challenged.

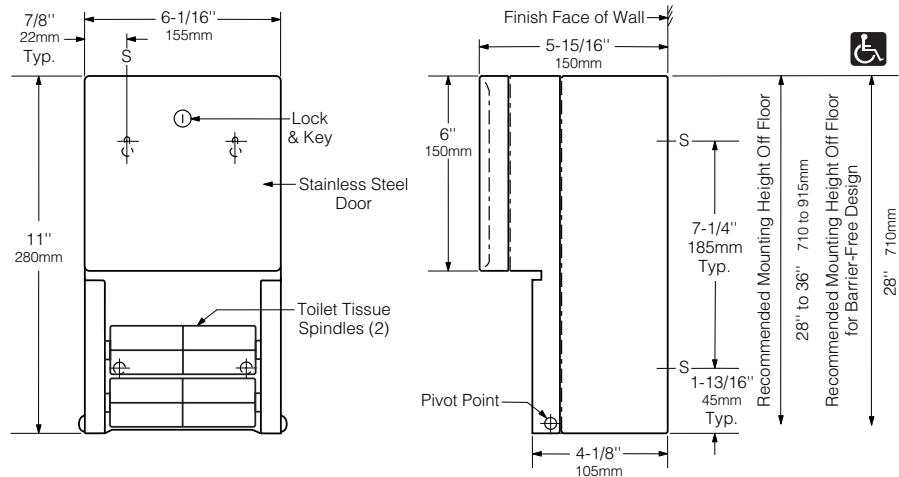


APPENDIX 3 - BATHROOM ACCESSORIES SPECIFICATION

PROJECT 217
540 + 578 NEPPERHAN AVENUE
YONKERS, NY, 10701

BOBRICK**Technical Data****CONTURA™ SERIES
SURFACE-MOUNTED
MULTI-ROLL TOILET
TISSUE DISPENSER****B-4288**

Patented

**MATERIALS:**

Cabinet — 18-8 S, type-304, 22-gauge (0.8mm) stainless steel. All-welded construction. Exposed surfaces have satin finish. Radius on top corners of cabinet match corners and edges of door.

Door — 18-8 S, type-304, 22-gauge (0.8mm) stainless steel with 18-gauge (1.2mm) stainless steel door frame. Exposed surfaces have satin finish. Front of door is drawn, one-piece, seamless construction and has same degree of arc as other Bobrick Contura Series washroom accessories. Radius on corners and edges of door match top corners of cabinet and other Contura Series accessories. Secured to cabinet with two rivets. Equipped with a flush tumbler lock keyed like other Bobrick washroom accessories.

Dispensing Mechanism, Inner Housing and Cam — 18-8 S, type-304, 18-gauge (1.2mm) stainless steel.

Spindles (2) — Heavy-duty, one-piece, molded ABS. Theft-resistant. Retained in dispensing mechanism when door is locked.

OPERATION:

Unit holds two standard-core toilet tissue rolls up to 5-1/4" (133mm) diameter (1800 sheets). Tissue rolls are loaded and locked into dispensing mechanism. Extra roll automatically drops in place when bottom roll is depleted. Depleted rolls can only be removed after unlocking door.

INSTALLATION:

For partitions with particleboard or other solid core, secure with four #10 x 5/8" (4.8 x 16mm) sheet-metal screws (not furnished) at points indicated by an S, or provide through-bolts, nuts, and washers.

For hollow-core metal partitions, provide solid backing into which the sheet-metal screws can be secured. If two units are installed back-to-back, then provide threaded sleeves and machine screws for the full thickness of partition.

For plaster or dry wall construction, provide concealed backing to comply with local building codes, then secure unit with sheet-metal screws.

For other wall surfaces, provide fiber plugs or expansion shields for use with sheet-metal screws, or provide 3/16" (5mm) toggle bolts or expansion bolts.

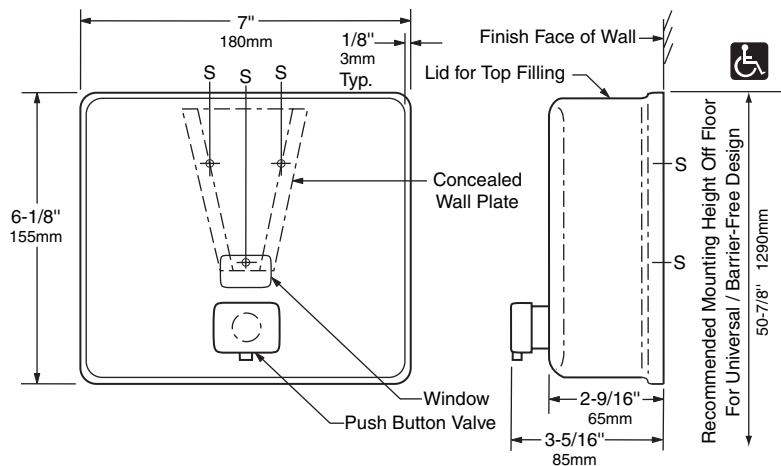
SPECIFICATION:

Surface-mounted multi-roll toilet tissue dispenser shall be type-304 stainless steel with all-welded construction, including dispensing mechanism, inner housing and cam; exposed surfaces shall have satin finish. Front of toilet tissue dispenser door shall be drawn, one-piece, seamless construction and shall have same degree of arc and match other Bobrick Contura™ Series accessories in the washroom. Radius on corners and edges of door and cabinet shall complement other Bobrick Contura™ Series washroom accessories. Door shall be secured to cabinet with two rivets and equipped with a flush tumbler lock keyed like other Bobrick washroom accessories. Unit shall dispense two standard-core toilet tissue rolls up to 5-1/4" (133mm) diameter (1800 sheets). Extra roll shall automatically drop in place when bottom roll is depleted. Unit shall be equipped with two theft-resistant, heavy-duty, one-piece, molded ABS spindles. Manufacturer's service and parts manual shall be provided to the building owner/manager upon completion of project.

Surface-Mounted Multi-Roll Toilet Tissue Dispenser shall be Model B-4288 of Bobrick Washroom Equipment, Inc., Clifton Park, New York; Jackson, Tennessee; Los Angeles, California; Bobrick Washroom Equipment Company, Scarborough, Ontario; Bobrick Washroom Equipment Pty. Ltd., Australia; and Bobrick Washroom Equipment Limited, United Kingdom.



Patented



MATERIALS:

Container — Body is 18-8 S, type-304, 20-gauge (1.0mm) stainless steel with satin finish. Drawn, one-piece, seamless construction. Front has same degree of arc as other Bobrick ConturaSeries washroom accessories. Radius on corners and edges complement other ConturaSeries accessories. Back plate is 22-gauge (0.8mm) stainless steel with 20-gauge (1.0mm) stainless steel mounting bracket attached. Container body and back plate are epoxy-sealed to prevent warping and leakage. Concealed wall plate is 20-gauge (1.0mm) stainless steel. Equipped with a plastic soap refill-indicator window and a locked, hinged stainless steel lid for top filling. Capacity: 40-fl oz (1.2-L).

Valve — Black molded plastic push button. Soap head-holding mushroom valve. Stainless steel spring. U-packing seal and duckbill. Antibacterial-soap-resistant plastic cylinder.

OPERATION:

Corrosion-resistant valve dispenses commercially marketed all-purpose hand soaps. Valve operates with one hand, without tight grasping, pinching, or twisting of the wrist, and with less than 5 pounds of force (22.2 N) to comply with barrier-free accessibility guidelines (including ADAAG in U.S.A.). Window indicates when refill is required. The locked, hinged lid opens for top filling with special key provided. Concealed, vandal-resistant mounting.

INSTALLATION:

Secure wall plate to the wall with screws furnished at points indicated by an S. Slide mounting bracket of container down onto wall plate and secure unit with furnished locking-screw. For plaster or dry wall construction, provide concealed backing to comply with local building codes, then secure unit with screws furnished. For other wall surfaces, provide fiber plugs or expansion shields for use with screws furnished, or provide 1/8" (3mm) toggle bolts or expansion bolts.

Note: Surface-mount the dispenser plumb and true with valve 6" (152mm) to right or left of lavatory center. Provide 4" (102mm) minimum clearance from the lid to the underside of any horizontal projection. Push buttons should be located 44" (1120mm) maximum above the finish floor.

SPECIFICATION:

Surface-mounted soap dispenser shall be type-304 stainless steel with satin finish. Corrosion-resistant valve shall dispense commercially marketed all-purpose hand soaps. Valve shall be operable with one hand and with less than 5 pounds of force (22.2 N) to comply with barrier-free accessibility guidelines (including ADAAG in U.S.A.). Front of soap dispenser shall have same degree of arc and match other Bobrick ConturaSeries™ accessories in the washroom. Radius on corners and edges of soap dispenser shall complement other Bobrick ConturaSeries™ washroom accessories. Container body and back plate shall be epoxy-sealed to prevent warping and leakage. Soap dispenser shall have concealed, vandal-resistant mounting. Locked, hinged stainless steel lid for top filling shall require special key to open. Capacity shall be 40-fl oz (1.2-L). Manufacturer's service and parts manual shall be provided to the building owner/manager upon request.

Surface-Mounted Stainless Steel Soap Dispenser For Antibacterial Soaps shall be Model B-4112 of Bobrick Washroom Equipment, Inc., Clifton Park, New York; Jackson, Tennessee; Los Angeles, California; Bobrick Washroom Equipment Company, Scarborough, Ontario; Bobrick Washroom Equipment Pty. Ltd., Australia; and Bobrick Washroom Equipment Limited, United Kingdom.



Technical Data

MIRROR WITH STAINLESS STEEL CHANNEL FRAME AND SHELF

B-166 SERIES

SNAP LOCKING DESIGN

(Rear View)

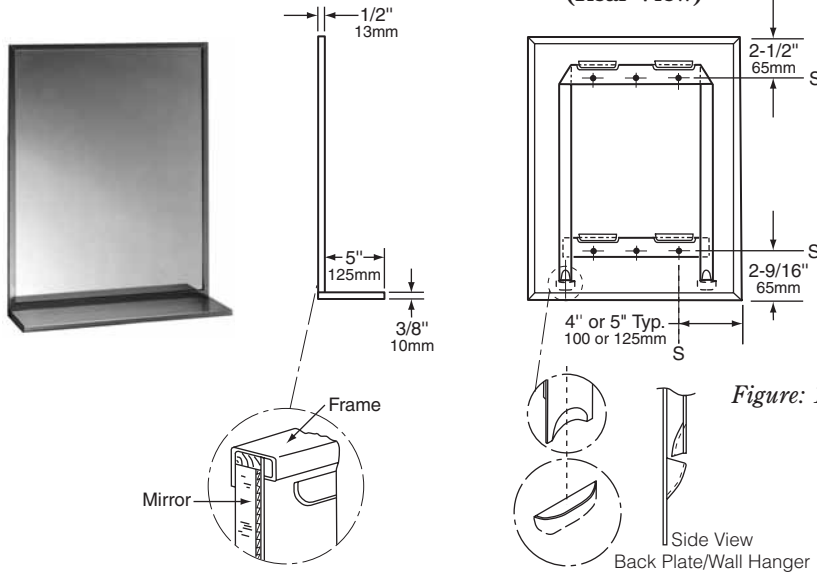


Figure: 1

SCREW LOCKING DESIGN

(Rear View)

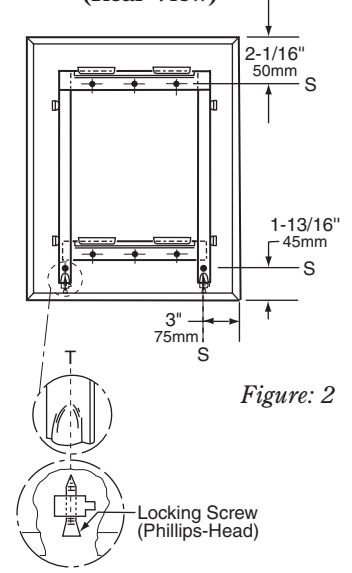


Figure: 2

STANDARD B-166 SERIES MIRRORS

MODEL NO.	OVERALL SIZE	
	W	H
B-166 1824	18" (46cm)	24" (61cm)
B-166 1830	18" (46cm)	30" (76cm)
B-166 1836	18" (46cm)	36" (91cm)
B-166 2436	24" (61cm)	36" (91cm)

ALL OTHER SIZE MIRRORS

Designer's Notes:

1. Special-order sizes available on request.
2. Maximum size mirror available, 24" x 60" (61 x 152cm); minimum size, 12" x 12" (30 x 30cm). Maximum shelf length is 24" (61cm).
3. All Bobrick framed mirror/shelf models are manufactured to overall width and height dimensions including shelf. EXAMPLE: A 24" x 36" (61 x 91cm) mirror will be furnished 24" x 36" (61 x 91cm) outside-of-frame to outside-of-frame including shelf.
4. To specify special sizes use Series Number followed by width then height in inches. EXAMPLE: B-166 2024.
5. Bobrick framed mirror/shelf models are manufactured to a tolerance $\pm 1/8"$ (3.2mm).
6. For sufficient space to lift mirror onto wall hanger(s), provide 3-1/4" (85mm) minimum clearance above center line of mounting screw holes.
7. Provide 1" (25mm) minimum clearance at bottom of mirror for engaging locking screws and 1" (25mm) clearance on each side.

MATERIALS:

Frame — Type 430 stainless steel, 1/2" x 1/2" x 3/8" (13 x 13 x 9.5mm) channel 1/4" (6mm) return at rear with bright polished finish. One-piece frame with 90 degree mitered corners. Galvanized steel back has integral horizontal hanging brackets near the top for hanging the mirror and near the bottom to prevent the bottom of the mirror from pulling away from the wall. Locking devices secure mirror to concealed wall hanger. In Screw Locking Design (see figure 2), concealed Phillips-head locking screws securely fasten mirror to wall hanger.

Shelf — 18-8 S, type 304, 22-gauge (0.8mm) stainless steel with satin finish. 3/8" (10mm) return edges on front and sides with front edge hemmed for additional safety. Shelf is welded to mirror frame and reinforced by concealed 16-gauge (1.6mm) stainless steel brackets. No exposed rivet-heads, screws, or fasteners of any type appear on frame or shelf.

Mirror — No. 1 quality, 1/4" (6mm) select float glass: selected for silvering, electrolytically copper-plated by the galvanic process, and guaranteed for 10 years against silver spoilage. Corners are protected by friction-absorbing filler strips; back is protected by full-size, shock-absorbing, water-resistant, nonabrasive, 3/16" (5mm) thick polyethylene padding.

Concealed Wall Hanger — 20-gauge (9.0mm) galvanized steel. Incorporates lower support member, forming rigid rectangle, which engages lower backplate louvers to keep bottom of mirror against wall.

continued . . .

INSTALLATION:

Mount wall hanger on wall with screws (furnished by manufacturer) at points indicated by an *S*. For plaster or dry wall construction, provide backing to comply with local building codes, then secure wall hanger with screws furnished. When providing a concealed backing, allow backing to cover minimum range of mounting hole locations shown on drawing. For other wall surfaces, provide fiber plugs or expansion shields for use with screws furnished, or provide 1/8" (3mm) toggle bolts or expansion bolts. Hang mirror on wall hanger with all four backplate louvers engaged behind horizontal wall hanger members. To do this, mirror must be centered in front of the wall hanger horizontally, pressed flat against the wall approximately 1" (25mm) above final position and then lowered into final position.

Snap Locking Design — Locking devices automatically secure mirror to concealed wall hanger when it is lowered into final position. Locking devices may be unlocked by inserting two flat blade screwdrivers behind each side of mirror near the bottom or under the bottom of the mirror and pulling mirror bottom forward and then up (see figure 3).

Screw locking Design — Lock mirror to wall hanger by tightening Phillips-head locking screws that are concealed in the bottom of frame by points indicated by a *T*. Mirror may be unlocked from wall hanger by loosening locking screws and lifting mirror off of concealed wall hanger (see figure 4).

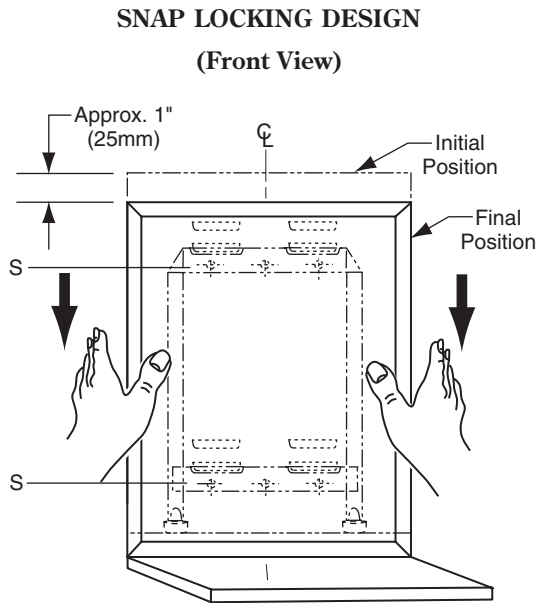


Figure: 3

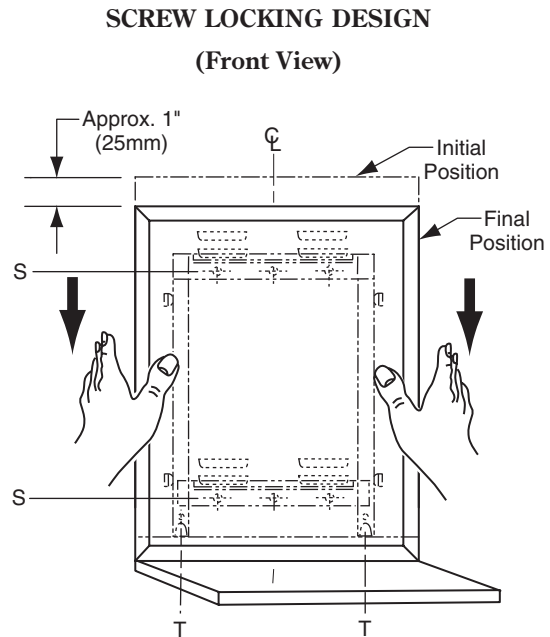


Figure: 4

SPECIFICATION:

Mirror shall have a one-piece type 430 stainless steel channel frame, 1/2" x 1/2" x 3/8" (13 x 13 x 9.5mm), with 90° mitered corners; all exposed surfaces shall have bright polished finish. Shelf shall be type 304, 22-gauge (0.8mm) stainless steel with satin finish and shall have 3/8" (10mm) return edges on front and sides with front return edge hemmed. Shelf shall be welded to mirror frame and reinforced by concealed stainless steel brackets. No rivet-heads, screws, or fasteners of any kind shall be exposed on frame or shelf. Select float glass mirror shall be guaranteed for 10 years against silver spoilage. Corners shall be protected by friction-absorbing filler strips and the back shall be protected by full-size, shock-absorbing, water-resistant, nonabrasive, 3/16" (5mm) thick polyethylene padding. Galvanized steel back shall have integral horizontal hanging brackets located at top and bottom for mounting on concealed rectangular wall hanger and to prevent the mirror from pulling away from the wall. Locking devices secure mirror to concealed wall hanger. Mirror shall be removable from wall.

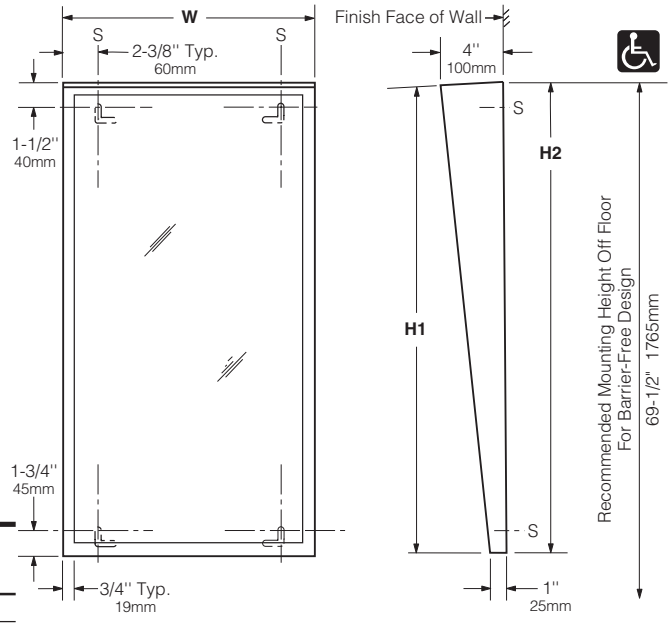
Framed Mirror With Shelf shall be Model B-166 _____ (insert width and height) of Bobrick Washroom Equipment, Inc., Clifton Park, New York; Jackson, Tennessee; Los Angeles, California; Bobrick Washroom Equipment Company, Scarborough, Ontario; Bobrick Washroom Equipment Pty. Ltd., Australia; and Bobrick Washroom Equipment Limited, United Kingdom.



Technical Data

TILT MIRROR WITH STAINLESS STEEL FRAME

B-293 SERIES



STANDARD STOCK SIZES

MODEL NO.	MIRROR SIZE		OVERALL SIZE	
	W	H1	W	H2
B-293 1630	16" (41cm)	30" (76cm)	16" (41cm)	30-3/16" (77cm)
B-293 1830	18" (46cm)	30" (76cm)	18" (46cm)	30-3/16" (77cm)
B-293 1836	18" (46cm)	36" (91cm)	18" (46cm)	36-3/16" (92cm)
B-293 2436	24" (61cm)	36" (91cm)	24" (61cm)	36-3/16" (92cm)

Other sizes up to 36" x 48" (91 x 122cm) or 48" x 36" (122 x 91cm) are available on special order; minimum size available, 12" x 18" (30 x 46cm).

MATERIALS:

Frame — 18-8 S, type 304, heavy-gauge stainless steel with satin finish. Tapers from 4" (100mm) depth at top to 1" (25mm) depth at bottom. Bevel design on front holds frame tightly against mirror. Corners are welded, ground, and polished smooth. Galvanized steel back and inner stiffener frame is one-piece welded construction with slots for mounting screws and integral screw-head lock.

Designer's Note: Type 304 stainless steel provides superior corrosion resistance, compared to 400 Series stainless steel, against environmental moisture, hose-down maintenance and strong cleaning solutions.

Mirror — No. 1 quality, 1/4" (6mm) select float glass, selected for silvering; electrolytically copper-plated by the galvanic process, guaranteed for 15 years against silver spoilage. All edges are polished and protected by plastic filler strips; back is protected by full-size, shock-absorbing, water-resistant, nonabrasive, 1/8" (3mm) thick polystyrene padding.

OPERATION:

Mirror is designed to provide full visibility for wheelchair patients in hospitals and nursing homes.

INSTALLATION:

Mount vertically on wall with four screws, furnished by manufacturer, at points indicated by an S. Screws are to be located in wall with heads protruding 5/32" (4mm) from finish face of wall. Hang mirror by hooking mounting screw slots in mirror back over screws and pulling down on mirror 1" (25mm) until unit locks in place. 7/8" (22mm) clearance is required at top of mirror for installation. For plaster or dry wall construction, provide concealed backing to comply with local building codes, then secure unit with screws furnished. For other wall surfaces, provide fiber plugs or expansion shields for use with screws furnished, or provide 1/8" (3mm) toggle bolts or expansion bolts.

SPECIFICATION:

Tilt mirror frame shall be type 304 stainless steel with beveled front to hold frame tightly against mirror; corners shall be welded, ground, and polished smooth; all exposed surfaces shall have satin finish with vertical grain. Select float glass mirror shall be guaranteed for 15 years against silver spoilage. All edges shall be protected by plastic filler strips. Back shall be protected by full-size, shock-absorbing, water-resistant, nonabrasive, 1/8" (3mm) thick polystyrene padding. Back and inner stiffener frame shall be galvanized steel, one-piece welded construction with slots for mounting screws and integral screw-head lock.

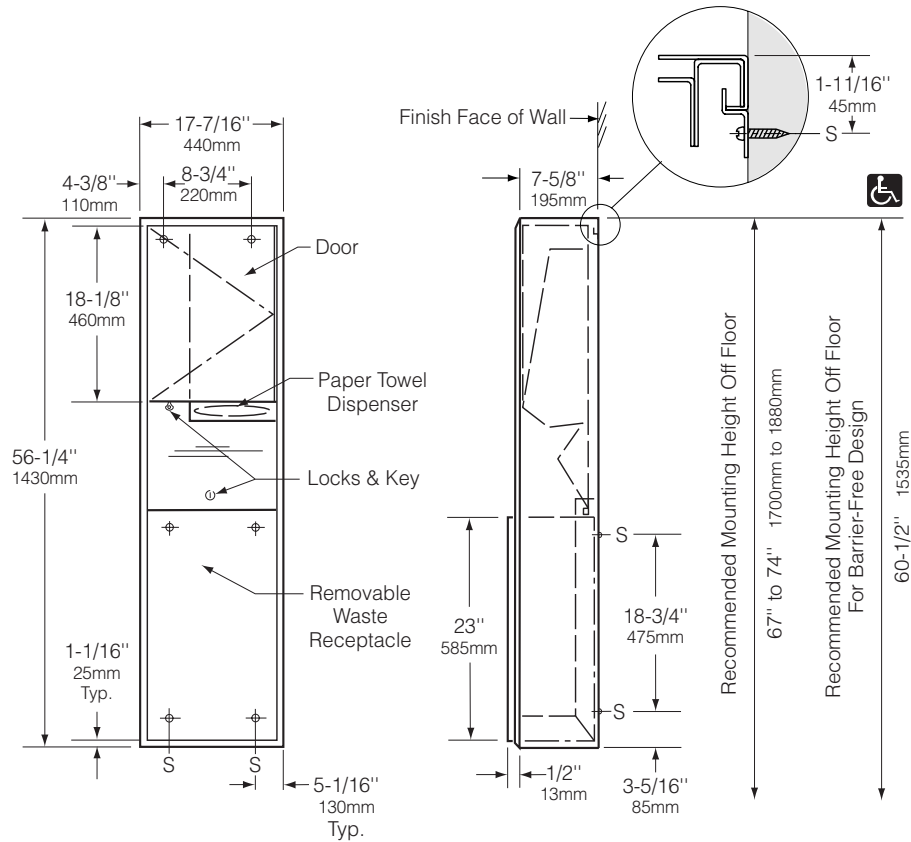
Tilt Mirror shall be Model B-293 _____ (insert width and height) of Bobrick Washroom Equipment, Inc., Clifton Park, New York; Jackson, Tennessee; Los Angeles, California; Bobrick Washroom Equipment of Canada Ltd., Scarborough, Ontario; Bobrick Washroom Equipment Pty. Ltd., Australia; and Bobrick Washroom Equipment Limited, United Kingdom.



Technical Data

SURFACE-MOUNTED PAPER TOWEL DISPENSER AND WASTE RECEPTACLE

B-3909



MATERIALS:

Cabinet — 18-8 S, type-304, heavy-gauge stainless steel. All-welded construction. Exposed surfaces have satin finish.

Flange — 18-8 S, type-304, 22-gauge (0.8mm) stainless steel with satin finish. Drawn and beveled, one-piece, seamless construction.

Skirt — 18-8 S, type-304, 22-gauge (0.8mm) stainless steel with satin finish.

Door — 18-8 S, type-304, 22-gauge (0.8mm) stainless steel with satin finish. Double-pan-back construction. Secured to cabinet with a full-length stainless steel piano-hinge. Equipped with a concealed tumbler lock keyed like other Bobrick washroom accessories.

Paper Towel Dispenser — 18-8 S, type-304, 22-gauge (0.8mm) stainless steel with satin finish. Rounded towel tray has hemmed opening to dispense paper towels without tearing. Capacity: 600 C-fold, 800 multifold, or 1100 singlefold paper towels.

Waste Receptacle — 18-8 S, type-304, 22-gauge (0.8mm) stainless steel with satin finish. Front and side edges of bottom and all top edges are hemmed for safe handling. Secured to cabinet with a tumbler lock keyed like other Bobrick washroom accessories. Equipped with interior hooks for optional vinyl liner. Capacity: 12 gal. (45.4 L).

continued . . .

OPERATION:

Paper towel dispenser adjusts to accommodate width of C-fold, multifold, or singlefold paper towels by repositioning built-in adapter tabs in one of five slots. To empty waste receptacle, unlock with key provided. Liner cannot be removed unless waste receptacle is unlocked from cabinet. Reusable vinyl liners are available as an optional accessory: order Bobrick Part No. 3944-12.

INSTALLATION:

Mount unit on wall using six #8 x 1/4" (4.2 x 32mm) sheet-metal screws (not furnished) at points indicated by an S. For plaster or dry wall construction, provide concealed backing to comply with local building codes, then secure unit with sheet-metal screws. For other wall surfaces, provide fiber plugs or expansion shields for use with sheet-metal screws, or provide 1/8" (3mm) toggle bolts or expansion bolts. If unit projects above top of wainscot, provide aluminum channel or other filler to eliminate gap between unit and finish face of wall.

SPECIFICATION:

Surface-mounted paper towel dispenser and waste receptacle shall be type-304 stainless steel with all-welded construction; exposed surfaces shall have satin finish. Flange shall be drawn and beveled, one-piece, seamless construction. Door shall be secured to cabinet with a full-length stainless steel piano-hinge and equipped with a tumbler lock keyed like other Bobrick washroom accessories. Paper towel dispenser shall dispense 600 C-fold, 800 multifold, or 1100 singlefold paper towels. Removable waste receptacle shall be secured to cabinet with a tumbler lock keyed like other Bobrick washroom accessories, have front and side edges of bottom and all top edges hemmed for safe handling, and shall have a minimum capacity of 12 gal. (45.4 L). Manufacturer's service and parts manual shall be provided to the building owner/manager upon completion of project.

Surface-Mounted Paper Towel Dispenser And Waste Receptacle shall be Model B-3909 of Bobrick Washroom Equipment, Inc., Clifton Park, New York; Jackson, Tennessee; Los Angeles, California; Bobrick Washroom Equipment Company, Scarborough, Ontario; Bobrick Washroom Equipment Pty, Ltd., Australia; and Bobrick Washroom Equipment Limited, United Kingdom.